



SADC-CSC EXTREME TEMPERATURE ADVISORY

Issue Number: 9 of 2019/20 Season

Release Date: 09/01/2020

HIGHLIGHTS

HEADLINE: Maximum temperatures reaching the heat wave thresholds are expected in central and eastern parts of the SADC Region

Temperature forecasts indicate an increased probability of temperatures exceeding 40°C to be recorded in central towards eastern parts of the SADC region during the next seven (7) days (Figure 1). Parts of central and eastern SADC will experience persistent temperatures above 35°C over three (3) consecutive days and occasions where temperatures reach above 40°C during the forecast period of 09 – 15 January 2020.

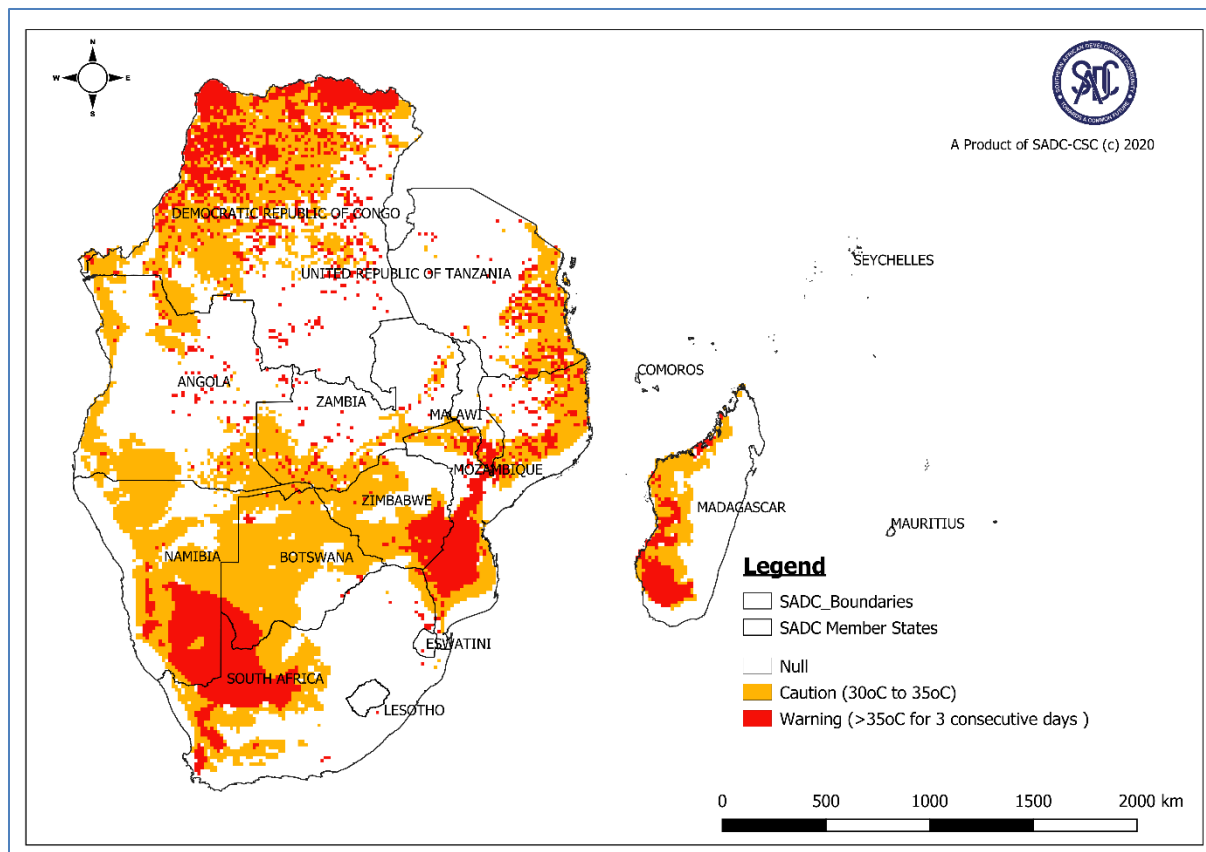


Figure 1: SADC Region's extreme temperature advisory for the period 09 – 15 January 2020
(Source: SADC-CSC-WRF GFS Model)

WARNING ZONE

Member States that are likely to experience extreme temperatures during the period 09 to 15 January 2020 include, south-western Botswana, northern Democratic Republic of Congo, south and western Madagascar, southern Malawi, central to southern Mozambique, central to south-eastern Namibia, north-western South Africa, and south-eastern Zimbabwe (Figure 2).

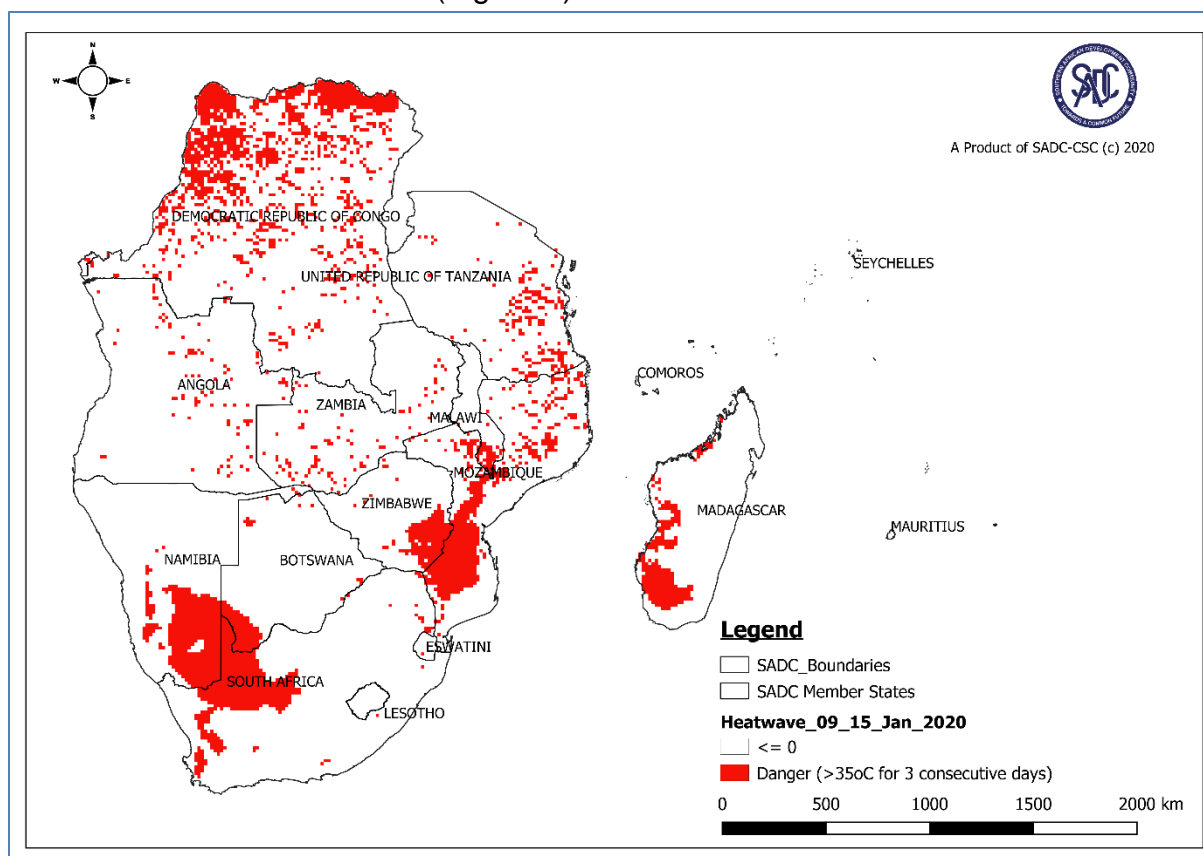


Figure 2: Extreme temperature Warning Zones forecasted for 09– 15 January 2019

RECOMMENDED ACTION

National Meteorological and Hydrological Services are urged to closely monitor temperature patterns and update relevant institutions such as Disaster Risk Management and Health Agencies at Member States on precautionary measures against the extreme temperatures.

Users are encouraged to consult National Meteorological and Hydrological Services at Member States for interpretation of this advisory.

NEXT ADVICE

The next advisory will be issued dependant on a sustained high temperature forecast expected to occur in more than a single SADC Member State

For more information contact:

SADC Climate Services Centre (SADC-CSC)

Private Bag 0095 Gaborone, Botswana

Email: csc1@sadc.int

Website: csc.sadc.int

<https://twitter.com/sadccsc>