



SADC CLIMATE SERVICES CENTRE (CSC) HEAVY RAINFALL ADVISORY

Issue Number: 10 of 2019/20

Release Date: 09/01/2020

FORECAST PERIOD: 09 TO 15 JANUARY 2020

HIGHLIGHTS

HEADLINE: The SADC CSC is forecasting a likelihood of rainfall amounts exceeding 50mm in a 24-hour period in some parts of the SADC region during the period 09 to 15 January 2020.

Central-to-eastern Angola, central and south-eastern Democratic Republic of Congo, northern Eswatini, south-eastern Lesotho, eastern Madagascar, parts of Malawi, central Mozambique, northern Namibia, central and eastern parts of South Africa, northern and southern parts of United Republic of Tanzania, and north and eastern Zambia have a high probability to receive heavy rainfall above 50mm in 24 hours (Figure 1) during the forecast period from 09 to 15 January 2020. These rains are likely to result in localized flooding in certain areas.

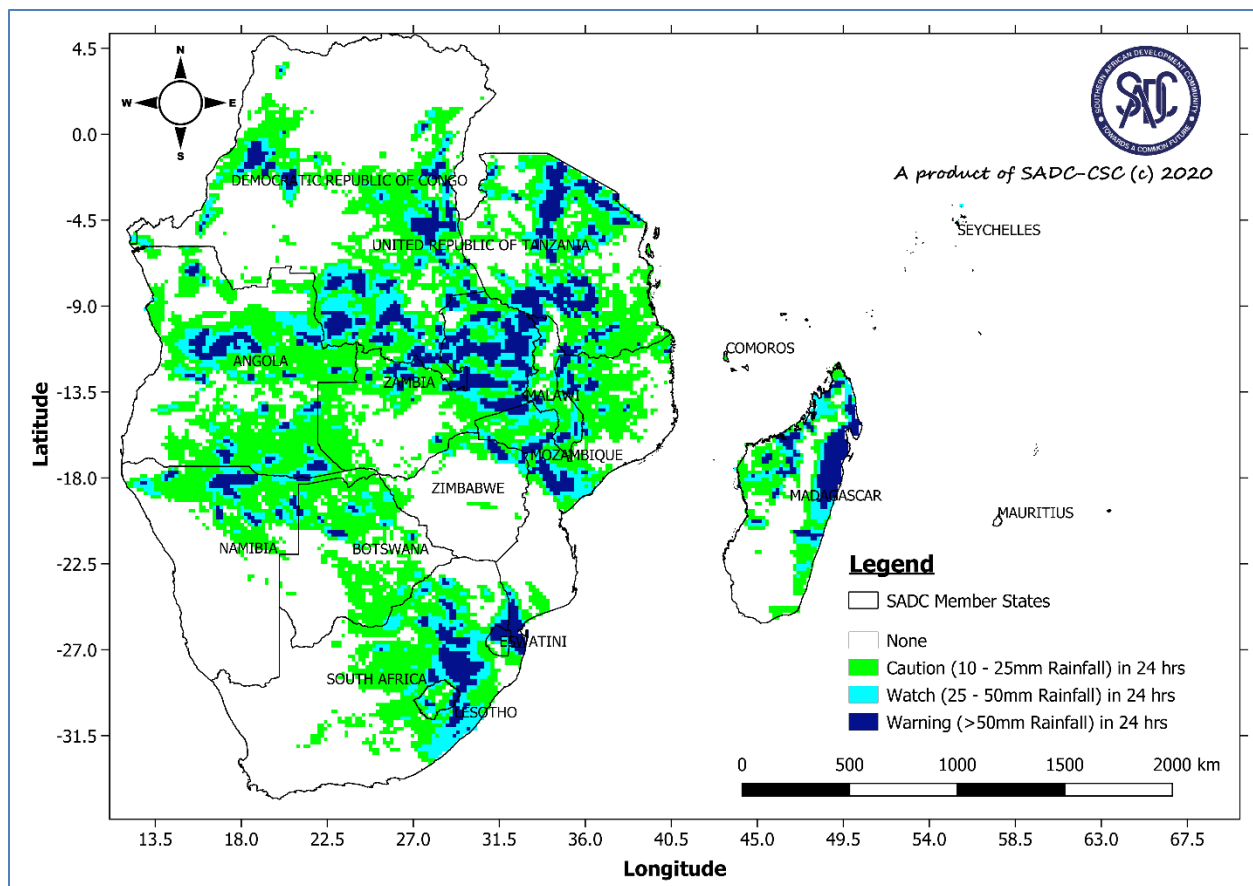


Figure 1: SADC Region's heavy rainfall advisory for the period 09 to 15 January 2020

Recommended Action

National Meteorological and Hydrological Services are urged to closely monitor these events and update relevant institutions such as Disaster Risk Management Agencies at Member States level to support preparedness and actions taken to protect lives and property.

Users are encouraged to consult National Meteorological and Hydrological Services at Member States for interpretation of this advisory.

Next Advice

The next advisory will be issued when an extreme event is detected to occur within the SADC Region.

For more information contact:

SADC Climate Services Centre (SADC-CSC)

Private Bag 0095, Gaborone, Botswana

Email: csc1@sadc.int

Website: csc.sadc.int

 <https://twitter.com/sadccsc>