



SADC-CLIMATE SERVICES CENTRE HEAVY RAINFALL ADVISORY

ISSUE NUMBER: 02 RELEASE DATE: 31/12/2024 VALIDITY: 07/01/2025

RAINFALL SEASON: 2024/25

Headline: Heavy rainfall bearing weather systems will affect parts of the SADC region including northwestern, northeastern, central to south eastern parts of the region as well as parts of the Island States of Madagascar and Seychelles.

SUMMARY

Analysis of model outputs from the SADC-CSC-WRF-GFS model show that **north eastern parts** stretching to **southeastern parts of the SADC region** will be impacted by heavy rainfall bearing weather systems during the next coming 7-day period from 1st to 7th January 2025.

ADVISORY AREAS

Parts of the SADC region that will experience heavy rainfall during the next coming 7-days period include, southwestern and eastern DRC, northwestern and southeastern Angola, most of Zambia, eastern Namibia, western Botswana, northern Zimbabwe, central to southern Tanzania, northwestern, central to southeastern parts of South Africa, Lesotho, north and southwestern parts of Madagascar during the period of 1 – 7 January 2025 (Figure 1).

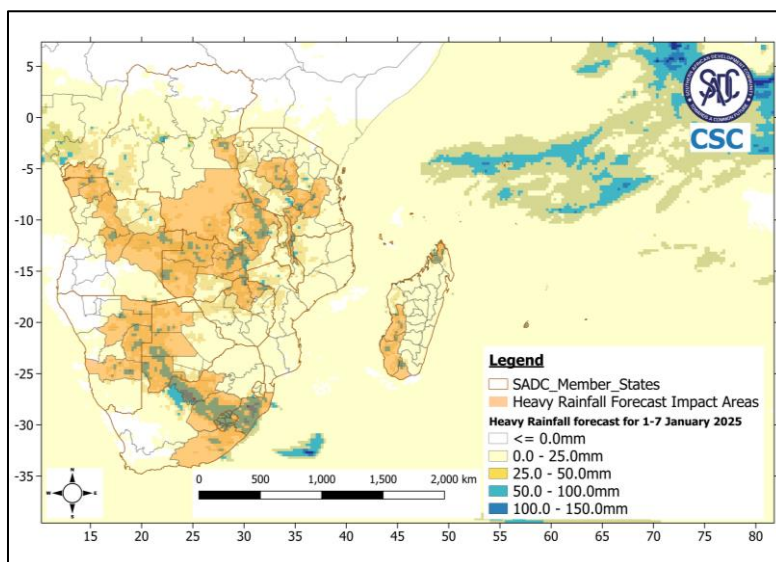


Figure 1: Heavy rainfall expected over the SADC region due to weather systems during the period of 1 – 7 January 2025 (Source: SADC-CSC WRF-GFS)

RECOMMENDED ACTION

National Meteorological and Hydrological Services are requested to closely monitor these events and update relevant institutions such as Disaster Risk Management Agencies at Member States level to support anticipatory action, preparedness and response measures to protect lives and property.

Users are strongly encouraged to consult the National Meteorological and Hydrological Services (NMHSs) in Member States for interpretation of this advisory and local warnings and alerts.

NEXT ADVICE

The next advisory will be issued as and when there is an evolution of tropical systems over the **Southwestern Indian Ocean basin** (*which extends from the equator to 40S and from the African coastlines to 90E*), that are likely to have a direct impact on SADC Member States.

For more information contact:

SADC Climate Services Centre (SADC-CSC)
SADC Secretariat
Private Bag 0095, Gaborone, Botswana
Email: csc1@sadc.int
Website: csc.sadc.int
 <https://x.com/sadccsc>

NOTE:

This bulletin used forecast data obtained from SADC-CSC WRF Model.

Users are therefore, urged to consult the local National Meteorological and Hydrological Services (NMHSs) for local conditions and detailed interpretation of the contents of this bulletin.



ClimSA

INTRA-ACP CLIMATE SERVICES AND RELATED APPLICATIONS PROGRAMME



An initiative of the Organisation of African, Caribbean and Pacific States funded by the European Union



SADC Secretariat, Climate Services Centre Private Bag 0095 Gaborone Botswana, [Tel. +267 3951863](tel:+2673951863)
[Fax +267 3972848](tel:+2673972848) [Email: csc1@sadc.int](mailto:csc1@sadc.int), [Website: csc.sadc.int](http://csc.sadc.int)