



SADC-CLIMATE SERVICES CENTRE HEAVY RAINFALL ADVISORY

ISSUE NUMBER: 04 RELEASE DATE: 18/02/2025 VALIDITY: 25/02/2025

RAINFALL SEASON: 2024/25

Headline: Heavy rainfall bearing weather systems will affect most parts of the SADC region including most parts of the Island States of Madagascar and Mauritius.

SUMMARY

Analysis of model outputs from the SADC-CSC-WRF-GFS model, European Centre for Medium Range Weather Forecasting (ECMWF) model and Regional Specialized Meteorological Centre (RSMC) La Reunion show that **north eastern parts** stretching to **southeastern parts of the SADC region** will be impacted by heavy rainfall bearing weather systems during the next coming 7-day period from 19th to 25th January 2025.

ADVISORY AREAS

Parts of the SADC region that will experience heavy rainfall during the next coming 7-days period include, southwestern and southeastern DRC, northwestern and eastern half of Angola, most of Zambia, northeastern Namibia, southern and northern Botswana, most of Zimbabwe, southern Tanzania, most of Malawi, most parts of South Africa, Lesotho, most parts of Mozambique, most parts of Madagascar and Mauritius during the period of 19 – 25 February 2025 (Figure 1).

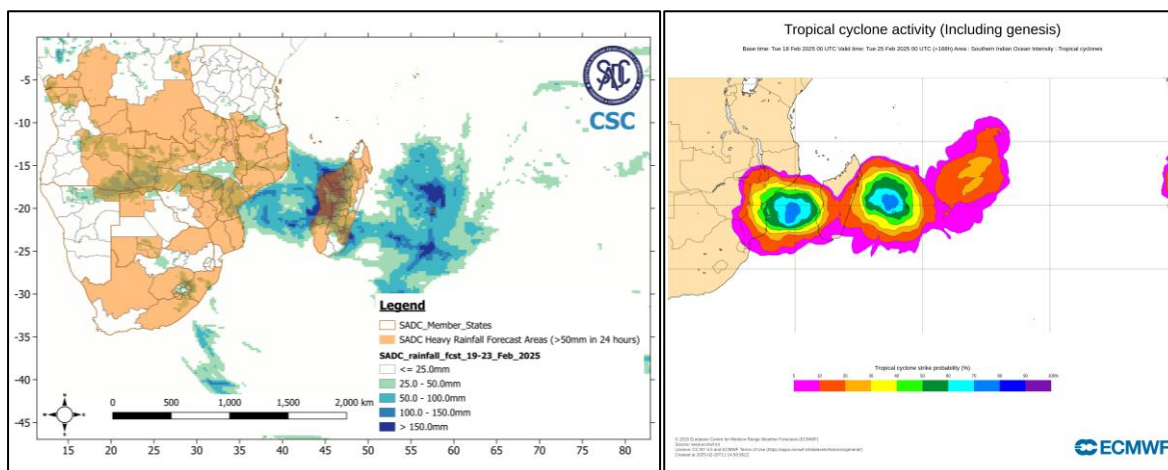


Figure 1: Heavy rainfall expected over the SADC region due to weather systems during the period of 19 – 25 February 2025 (Source: SADC-CSC WRF-GFS) and ECMWF tropical cyclone activity forecast

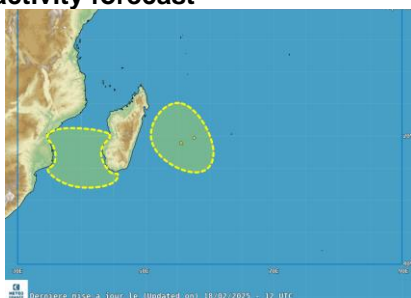


Figure 2: RSMC La Réunion cyclogenèses

RECOMMENDED ACTION

National Meteorological and Hydrological Services are requested to closely monitor these events and update relevant institutions such as Disaster Risk Management Agencies at Member States level to support anticipatory action, preparedness and response measures to protect lives and property.

Users are strongly encouraged to consult the National Meteorological and Hydrological Services (NMHSs) in Member States for interpretation of this advisory and local warnings and alerts.

NEXT ADVICE

The next advisory will be issued as and when there is an evolution of tropical systems over the **Southwestern Indian Ocean basin** (*which extends from the equator to 40S and from the African coastlines to 90E*), that are likely to have a direct impact on SADC Member States.

For more information contact:

SADC Climate Services Centre (SADC-CSC)
SADC Secretariat
Private Bag 0095, Gaborone, Botswana
Email: csc1@sadc.int
Website: csc.sadc.int
 <https://x.com/sadccsc>

NOTE:

This bulletin used forecast data obtained from SADC-CSC WRF Model.

Users are therefore, urged to consult the local National Meteorological and Hydrological Services (NMHSs) for local conditions and detailed interpretation of the contents of this bulletin.



ClimSA

INTRA-ACP CLIMATE SERVICES AND RELATED APPLICATIONS PROGRAMME



An initiative of the Organisation of African, Caribbean and Pacific States funded by the European Union



SADC Secretariat, Climate Services Centre Private Bag 0095 Gaborone Botswana, [Tel. +267 3951863](tel:+2673951863)
[Fax +267 3972848](tel:+2673972848) [Email: csc1@sadc.int](mailto:csc1@sadc.int), [Website: csc.sadc.int](http://csc.sadc.int)