



SADC-CLIMATE SERVICES CENTRE TROPICAL CYCLONE ADVISORY

ISSUE NUMBER: 03 OF 2020/21

RELEASE DATE: 18/01/2021

RAINFALL SEASON: 2020/21

HIGHLIGHTS

Headline: Tropical storm ELOISE is moving westwards towards Madagascar and it is likely to make landfall over Madagascar on the 20th January 2021. Tropical storm JOSHUA will not affect any of the SADC Member States.

Analysis of model outputs from the following sources; European Centre for Medium Range Weather Forecasting (ECMWF), Joint Typhoon Warning Center (JTWC), Regional Specialized Meteorological Centre (RSMC) La Reunion and the SADC Climate Services Centre WRF-GFS, indicate that tropical storm **ELOISE** currently has a central pressure of 995hPa and a maximum average wind speed of 65km/h near its centre. It is moving westward at 14km/h. There is a likelihood that ELOISE will make landfall over Madagascar on 20 January 2021. Another Tropical system present in the South West Indian Ocean (SWIO) basin is tropical storm **JOSHUA** that formed in the Australian Area of Responsibility and entered the SWIO basin. JOSHUA is not expected to make landfall on any SADC Member State.

WARNING ZONE

The forecast track indicate that tropical storm ELOISE is expected to affect northern Madagascar, parts of Comoros, and intensify before making landfall over Mozambique. There is a likelihood that ELOISE will also influence Zimbabwe, Eswatini and South Africa.

Other parts of SADC region that may experience increased rainfall due to other weather systems during the same period include parts of Angola, Botswana, DRC, Lesotho, Malawi, Namibia, United Republic of Tanzania, Zambia and Zimbabwe as shown in Figure 1 below.

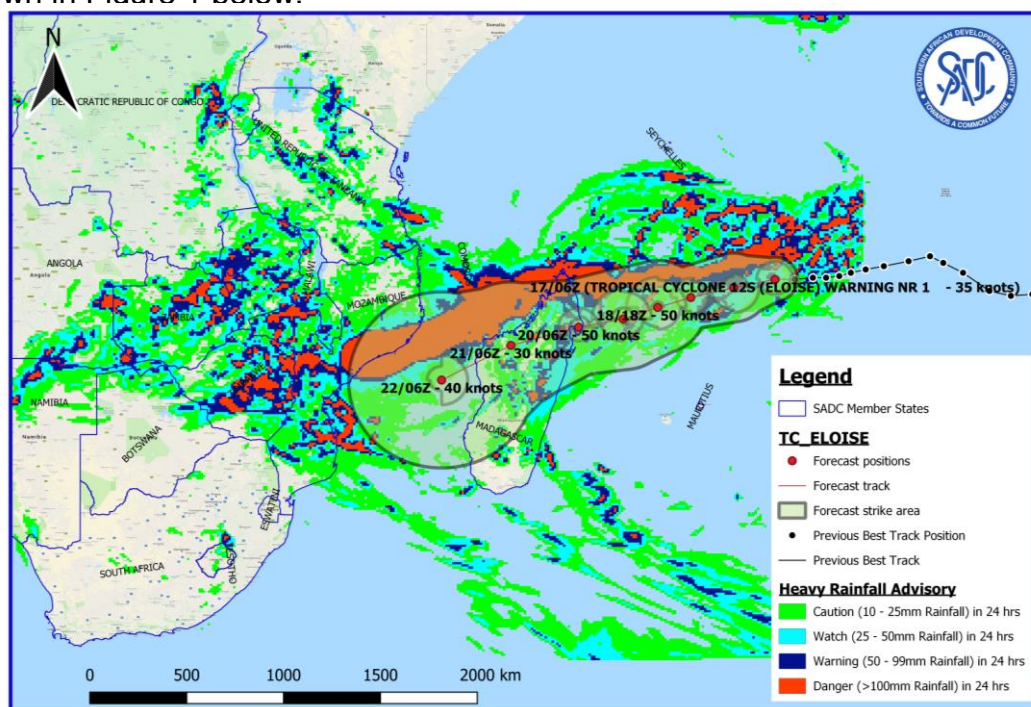


Figure 1: Heavy rainfall expected over the SADC region due to tropical storm ELOISE and other weather systems during the period of 17 to 21 January 2021 (Source: SADC-CSC WRF-GFS Model and JTWC (tracks))

RECOMMENDED ACTION

National Meteorological and Hydrological Services are requested to closely monitor these events and update relevant institutions such as Disaster Risk Management Agencies at Member States level to support preparedness and response measures to protect lives and property.

Users are encouraged to consult National Meteorological and Hydrological Services at Member States for interpretation of this advisory.

NEXT ADVICE

The next advisory will be issued when there is need to update information on the current evolving tropical system over the South-West Indian Ocean (SWIO) Basin that will have a direct impact on the SADC Region.

For more information contact:

SADC Climate Services Centre (SADC-CSC)

Private Bag 0095, Gaborone, Botswana

Email: csc1@sadc.int

Website: csc.sadc.int

 <https://twitter.com/sadccsc>