



## SADC-CLIMATE SERVICE CENTRE

### TROPICAL CYCLONE ADVISORY

ISSUE NUMBER: 01/ 2020/21 SEASON

RELEASE DATE: 28/12/2020

RAINFALL SEASON: 2020/21

#### HIGHLIGHTS

**Headline:** Tropical storm **Chalane** is moving westwards within the Mozambique Channel after passing through central Madagascar on the 27<sup>th</sup> December 2020. It is expected to make landfall on Mozambique coast on 30<sup>th</sup>.

Analysis from models (European Centre for Medium Range Weather Forecasting (ECMWF), Joint Typhoon Warning Center (JTWC), Regional Specialized Meteorological Centre (RSMC) in La Reunion and the SADC Climate Service Centre WRF-GFS) indicates that the tropical storm **Chalane** has degraded to a tropical depression after passing over Madagascar, but it has since intensified after entering the Mozambique Channel. Projected track of tropical storm **Chalane** shows that the system is carrying maximum sustained winds of 35 knots (65 km/h) is expected to strengthen to 65knots (120km/h) before making landfall on the central coast of Mozambique within the next two days.

#### WARNING ZONE

Tropical system Chalane has affected central and northern Madagascar and is likely to affect parts of central Mozambique and central Zimbabwe. Remnants of the tropical system are likely to influence northern Botswana all the way to central Namibia.

Other parts of the region that may experience increased rainfall not directly associated with the tropical storm during the same period include parts of Angola, DRC, Eswatini, Malawi, Seychelles, South Africa, United Republic of Tanzania and Zambia as shown in Figure 1 below.

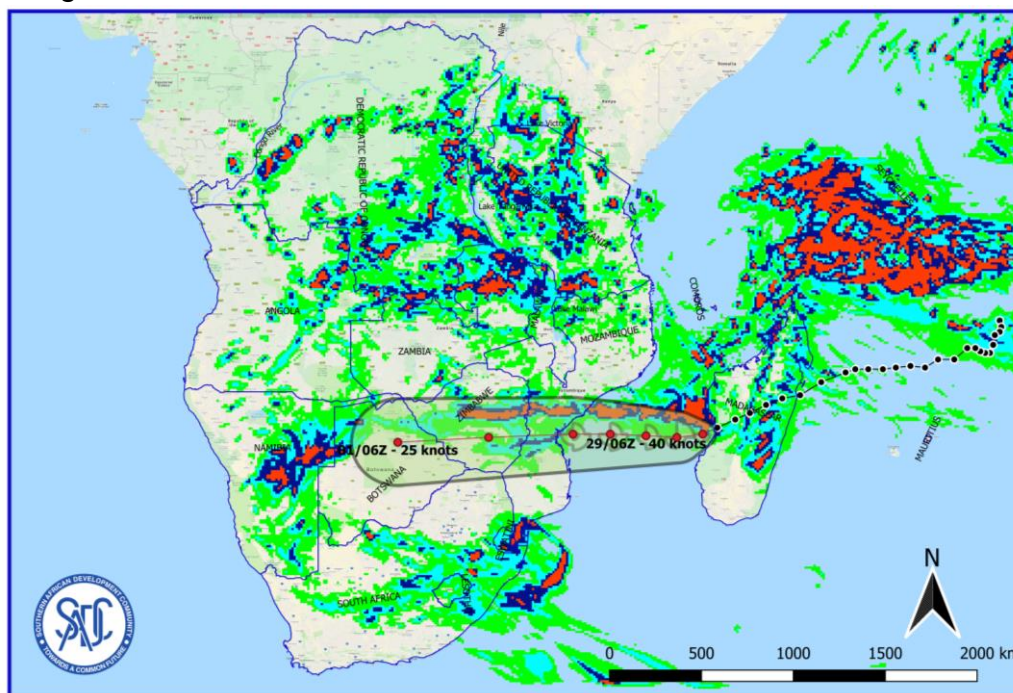


Figure 1: Heavy rainfall expected over the SADC region due to tropical cyclone Chalane and other weather systems during the period of 28 December 2020 to 4 January 2021 (Source: SADC-CSC WRF-GFS Model and JTWC (tracks))

## RECOMMENDED ACTION

National Meteorological and Hydrological Services are requested to closely monitor these events and update relevant institutions such as Disaster Risk Management Agencies at Member States level to support preparedness and response measures to protect lives and property.

*Users are encouraged to consult National Meteorological and Hydrological Services at Member States for interpretation of this advisory.*

## NEXT ADVICE

The next advisory will be issued when there is need for an update on the current evolving tropical system or a new system forming in the South-West Indian Ocean (SWIO) Basin and having a direct impact on the SADC Region.

**For more information contact:**

SADC Climate Services Centre (SADC-CSC)

Private Bag 0095, Gaborone, Botswana

Email: [csc1@sadc.int](mailto:csc1@sadc.int)

Website: [csc.sadc.int](http://csc.sadc.int)

 <https://twitter.com/sadccsc>