



SADC-CSC Tropical Cyclone Alert (TCA)

Issue Number: 02/ 2018

Release Date: 09/11/2018

Highlights

Headline: Tropical Cyclone Alcide strengthening northeast of Madagascar slowly moving towards the Comoros, Mozambique and southern Tanzania

Severe Tropical Cyclone Alcide is located approximately 234 km northeast of Madagascar. Movement is toward the west-northwest at 5 km/h and maximum sustained winds are near 176 km/h, this week with damaging winds and heavy rainfall.

WARNING ZONE

Lower islands of Seychelles and Madagascar are likely to be impacted by Tropical Cyclone Alcide in the next 4 days (96 hours).

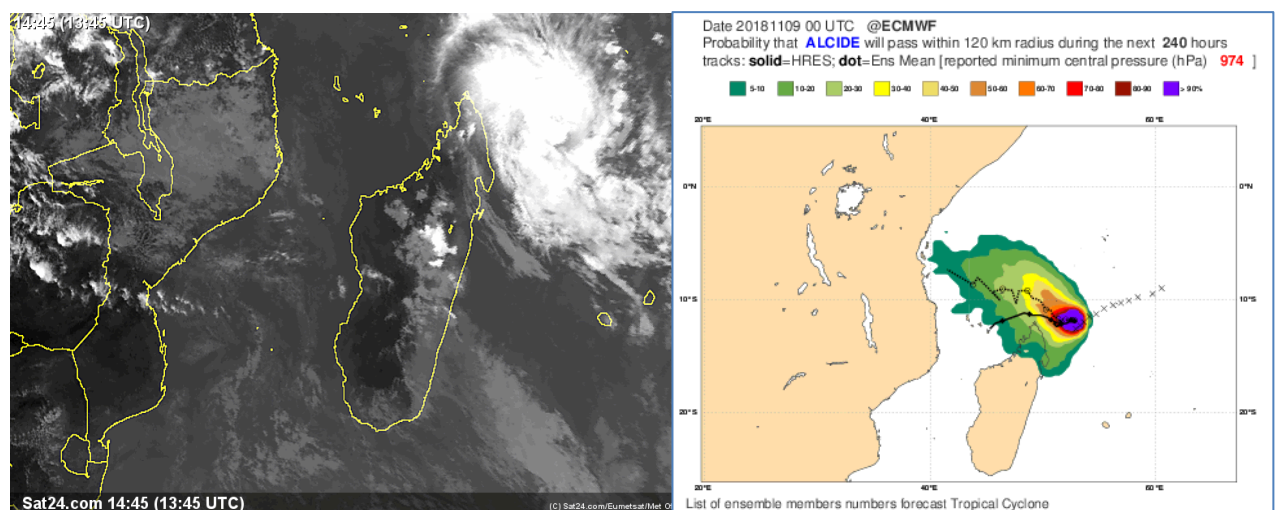


Figure 1: Current satellite image of tropical cyclone Alcide and its projected path (Source: ECMWF)

WATCH ZONE

Seychelles, Mozambique and Comoros fall within the projected track of the Tropical Cyclone thus are in the Watch Alert Zone for tropical cyclone Alcide.

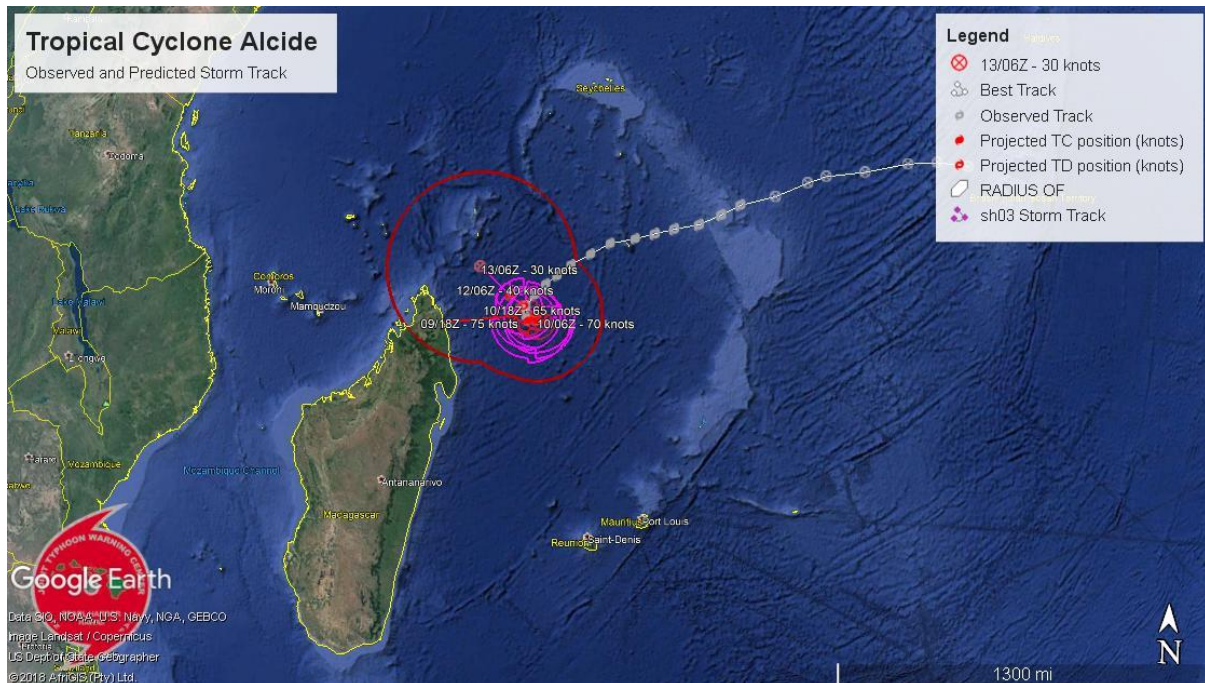


Figure 2: Observed and predicted storm track for Tropical Cyclone Alcide (Data Source: JTWC)

Recommended Action

Response agents such as National Disaster Management Agencies operating in northern Madagascar, southern islands of Seychelles and Comoros must be on the alert in case of the west - north-west displacement of the system. National Meteorological Services in these countries should monitor the tropical cyclone evolution during the next 4 days.