



SADC-CLIMATE SERVICES CENTRE TROPICAL CYCLONE ADVISORY

ISSUE NUMBER: 03 RELEASE DATE: 10/12/2024 VALIDITY: 15/11/2024

RAINFALL SEASON: 2024/25

Headline: Tropical Cyclone CHIDO has evolved from a tropical depression to a tropical cyclone and is projected to make landfall over northern Madagascar and Comoros and further cross into the Mozambique Channel where it will resuscitate back into a tropical cyclone due to the warm ocean waters and further make landfall over north coastal areas of Mozambique.

SUMMARY

Analysis of model outputs from the following sources: European Centre for Medium Range Weather Forecasting (ECMWF), Joint Typhoon Warning Centre (JTWC), Regional Specialized Meteorological Centre (RSMC) La Reunion, and the SADC CSC WRF-GFS show that **Tropical System 04 of 2024/25 has evolved to Tropical Cyclone CHIDO** and has recorded maximum sustained surface 92 km/h (50 knots) and minimum sea-level pressure is estimated to be near 994 mb. The potential for the development of a significant tropical cyclone within the next 24 hours is **high**. The tropical system is currently expected to directly affect **Madagascar, Comoros and later Mozambique and South Africa**.

WARNING ZONE

The tropical system forecast shows that **Tropical Cyclone CHIDO** (Figure 1) will make direct impact over **northern parts of Madagascar, Comoros and later Mozambique and northern South Africa**. These areas are likely to receive extreme rainfall associated with this system. Other parts of the SADC region expected to receive heavy rainfall due to other weather systems are most of western Angola, eastern DRC, parts of northern Tanzania, southern Botswana and Eswatini.

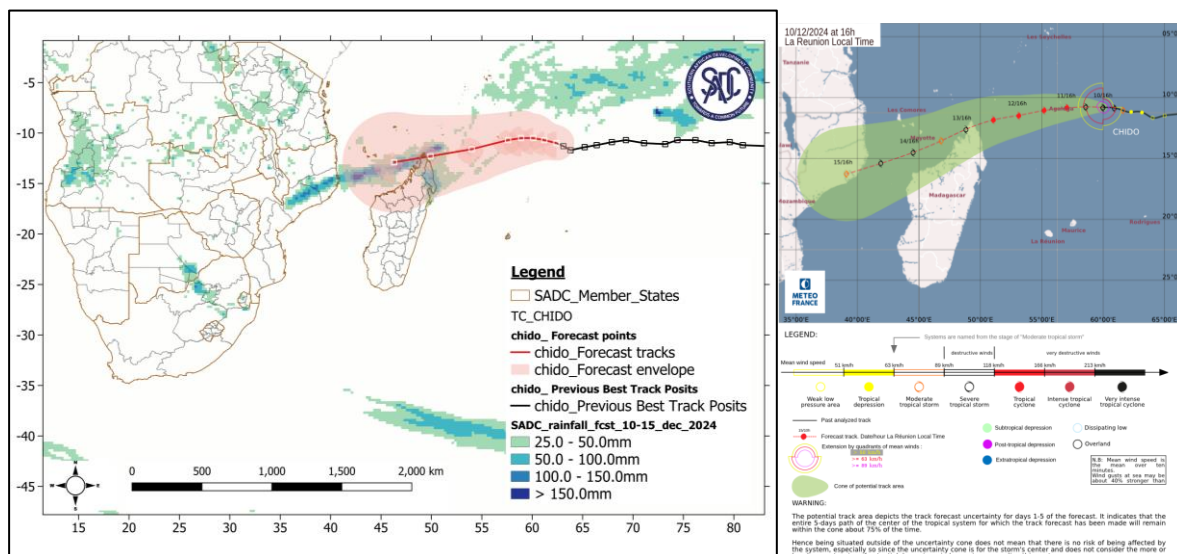


Figure 1: Heavy rainfall expected over the SADC region due to Tropical Cyclone CHIDO and other weather systems during the period of 10 – 15 December 2024 (Source: SADC-CSC WRF-GFS and JTWC (tracks)) and RSMC-La Reunion projected plume tropical cyclone track

RECOMMENDED ACTION

National Meteorological and Hydrological Services are requested to closely monitor these events and update relevant institutions such as Disaster Risk Management Agencies at Member States level to support anticipatory action, preparedness and response measures to protect lives and property.

Users are strongly encouraged to consult the National Meteorological and Hydrological Services (NMHSs) in Member States for interpretation of this advisory and local warnings and alerts.

NEXT ADVICE

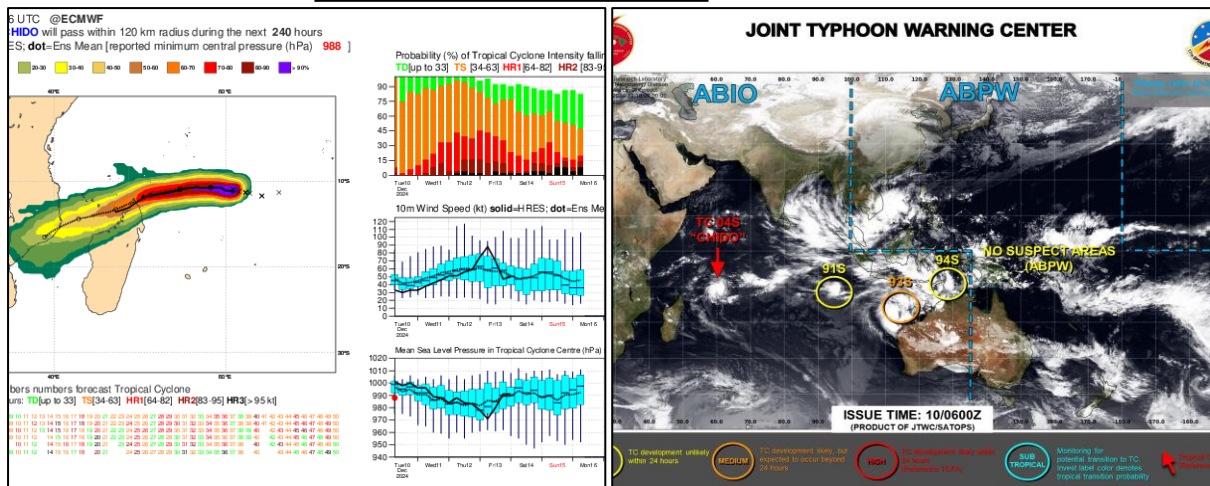
The next advisory will be issued as and when there is an evolution of tropical systems over the **Southwestern Indian Ocean basin (which extends from the equator to 40S and from the African coastlines to 90E)**, that are likely to have a direct impact on SADC Member States.

For more information contact:

SADC Climate Services Centre (SADC-CSC)
SADC Secretariat
Private Bag 0095, Gaborone, Botswana
Email: csc1@sadc.int
Website: csc.sadc.int
<https://x.com/sadccsc>

Appendix: ECMWF tropical cyclone track and JTWC tropical disturbance estimated positions

10 December 2024



[ECMWF | Charts](https://www.ecmwf.int) and <https://www.metoc.navy.mil/jtwc/jtwc.html>

NOTE:

This bulletin used forecast data obtained from RSMC La Reunion, JTWC, ECMWF and SADC-CSC.

Users are therefore, urged to consult the local National Meteorological and Hydrological Services (NMHSs) for local conditions and detailed interpretation of the contents of this bulletin.



ClimSA

INTRA-ACP CLIMATE SERVICES AND RELATED APPLICATIONS PROGRAMME



An initiative of the Organisation of African, Caribbean and Pacific States funded by the European Union



SADC Secretariat, Climate Services Centre Private Bag 0095 Gaborone Botswana, [Tel. +267 3951863](tel:+2673951863)
[Fax +267 3972848](tel:+2673972848) [Email: csc1@sadc.int](mailto:csc1@sadc.int), [Website: csc.sadc.int](http://csc.sadc.int)