



SADC-CLIMATE SERVICE CENTRE

TROPICAL CYCLONE ADVISORY

ISSUE NUMBER: 02 OF 2020/21

RELEASE DATE: 08/01/2021

RAINFALL SEASON: 2020/21

HIGHLIGHTS

Headline: Tropical storm **DANILO** is moving westwards towards Mauritius and south-eastern part of Madagascar and it is likely to make landfall over Mauritius on the 10th January 2021.

Analysis of 08 January 2021 model outputs from European Centre for Medium Range Weather Forecasting (ECMWF), Joint Typhoon Warning Center (JTWC), Regional Specialized Meteorological Centre (RSMC) La Reunion and the SADC Climate Service Centre WRF-GFS, indicates that tropical storm **DANILO** has a central pressure of 994hPa and a maximum average wind speed of 65km/h near its centre. It is moving westward at 17km/h. There is a likelihood that **DANILO** will make landfall over Mauritius on 10 January 2021.

WARNING ZONE

The forecast track indicate that tropical storm **DANILO** is expected to affect Mauritius and south-eastern parts of Madagascar.

Other parts of SADC region that may experience increased rainfall due to other weather systems during the same period include parts of Angola, Comoros, DRC, Lesotho, Malawi, Namibia, Seychelles, South Africa, United Republic of Tanzania, Zambia and Zimbabwe as shown in Figure 1 below.

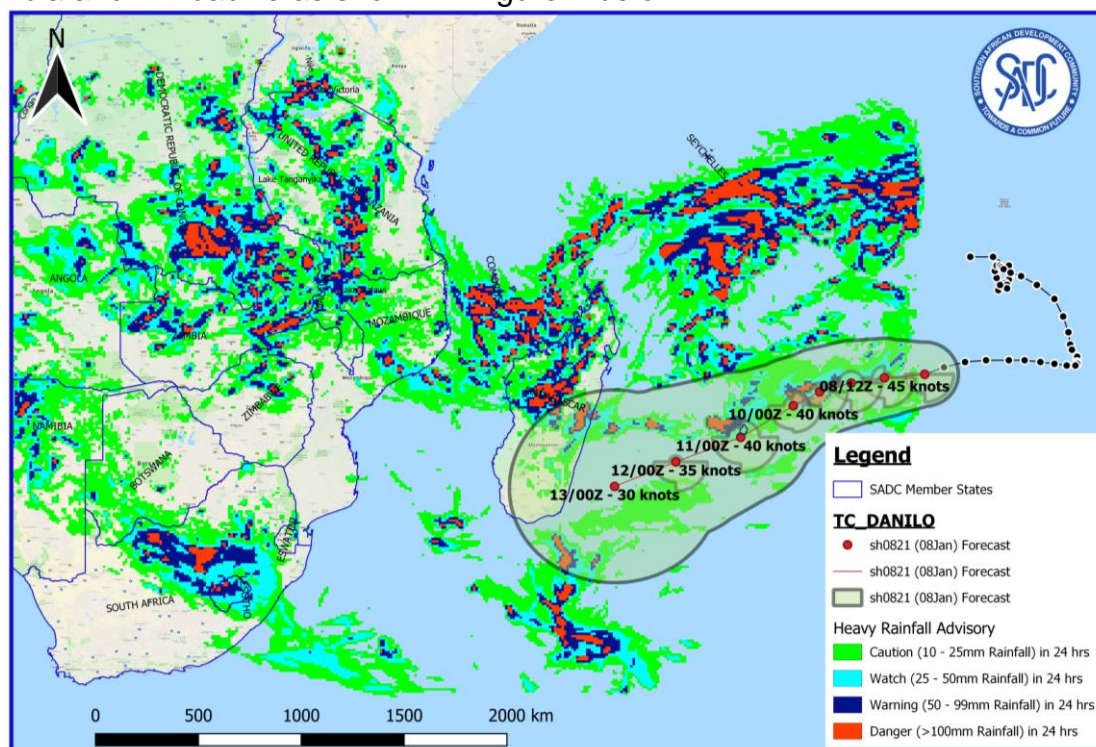


Figure 1: Heavy rainfall expected over the SADC region due to tropical storm **DANILO** and other weather systems during the period of 08 to 14 January 2021 (Source: SADC-CSC WRF-GFS Model and JTWC (tracks))

RECOMMENDED ACTION

National Meteorological and Hydrological Services are requested to closely monitor these events and update relevant institutions such as Disaster Risk Management Agencies at Member States level to support preparedness and response measures to protect lives and property.

Users are encouraged to consult National Meteorological and Hydrological Services at Member States for interpretation of this advisory.

NEXT ADVICE

The next advisory will be issued when there is need to update information on the current evolving tropical system over the South-West Indian Ocean (SWIO) Basin that will have a direct impact on the SADC Region.

For more information contact:

SADC Climate Services Centre (SADC-CSC)

Private Bag 0095, Gaborone, Botswana

Email: csc1@sadc.int

Website: csc.sadc.int

 <https://twitter.com/sadccsc>