



## SADC-CSC Tropical Cyclone Alert (TCA)

Issue Number: 01/ 2019

Release Date: 21/01/2019

### Highlights

**Headline:** Tropical Cyclone Desmond is strengthening in the Mozambique Channel and moving towards Mozambique Coast of Zambezia Province and parts of eastern Zimbabwe and southern tip of Malawi

**Severe Tropical Cyclone Desmond is located approximately 100 km of the Mozambican coastline. Movement is toward the central parts of Mozambique with maximum sustained winds of 76 km/h, with damaging winds and heavy rainfall.**

### WARNING ZONE

Central parts of Mozambique, eastern Zimbabwe, southern Malawi and western parts of Madagascar are likely to be impacted by Tropical Cyclone Desmond in the next 24 hours.

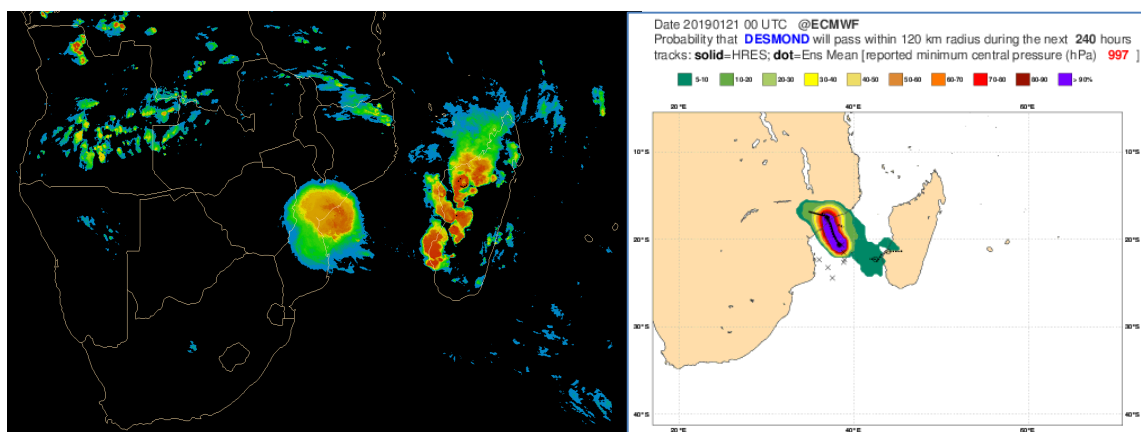
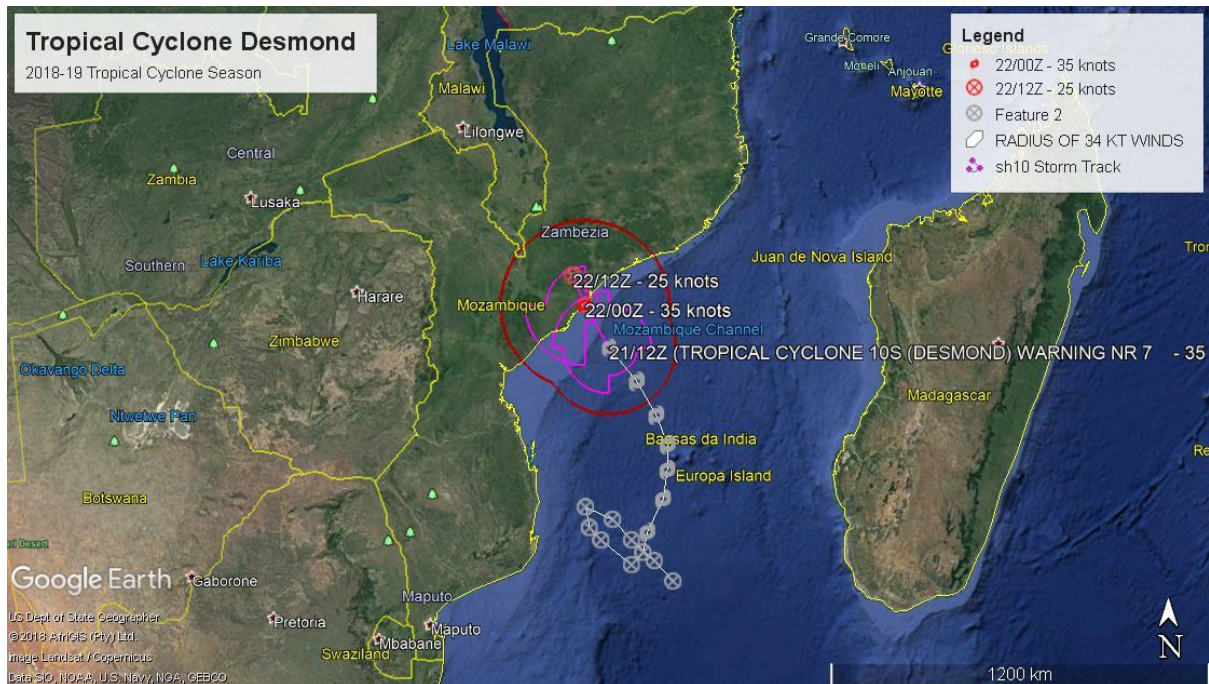


Figure 1: Current satellite image (source: MeteoSat) of tropical cyclone Desmond and its projected path (Source: ECMWF)

## WATCH ZONE

Mozambique and Malawi fall within the projected track of the Tropical Cyclone thus are in the Watch Alert Zone for tropical cyclone Desmond. Parts of eastern Zimbabwe will also be affected by the cyclone. Madagascar will experience heavy rains not directly from the cyclone, but due to cyclone's pulling effect.



**Figure 2: Observed and predicted storm track for Tropical Cyclone Desmond (Data Source: JTWC)**

## Recommended Action

National Meteorological Services of Mozambique, Malawi, Zimbabwe and Madagascar should monitor the tropical cyclone evolution during the next 24 hours. Response agents such as National Disaster Management Agencies operating in central Mozambique, eastern Zimbabwe, southern Malawi and eastern Madagascar, must be on the alert.