



SADC-CSC Tropical Cyclone Alert (TCA)

Issue Number: 03/ 2019

Release Date: 06/02/2019

Highlights

Headline: Tropical Cyclone Funani and Gelena are strengthening in the South-West Indian Ocean about 780Km from Port Louis in Mauritius and 640Km from coastal Madagascar respectively.

Tropical Cyclone Funani developed on the 4th February 2019 and is currently situated about 780km from Port Louis In Mauritius and is projected to move southwards away from impacting on the Island of Mauritius. However, tropical cyclone Gelena on the other hand, is already impacting north eastern parts of Madagascar and northern Mozambique due to its pull effect. On its projected move southwards it will impact parts of Mauritius before it dissipates in the cold waters of southern Indian Ocean.

WARNING ZONE

Parts of northern Mozambique and northern Madagascar are likely to receive increased rainfall amounts due to Tropical Cyclone Gelena in the next 24 hours, whilst Mauritius will experience increased rainfall activity around the 9th February 2019. Chances of rainfall amounts exceeding 60 millimetres in 24 hours are indicated by dark blue colours in the heavy rainfall alert map below for the next 7 days.

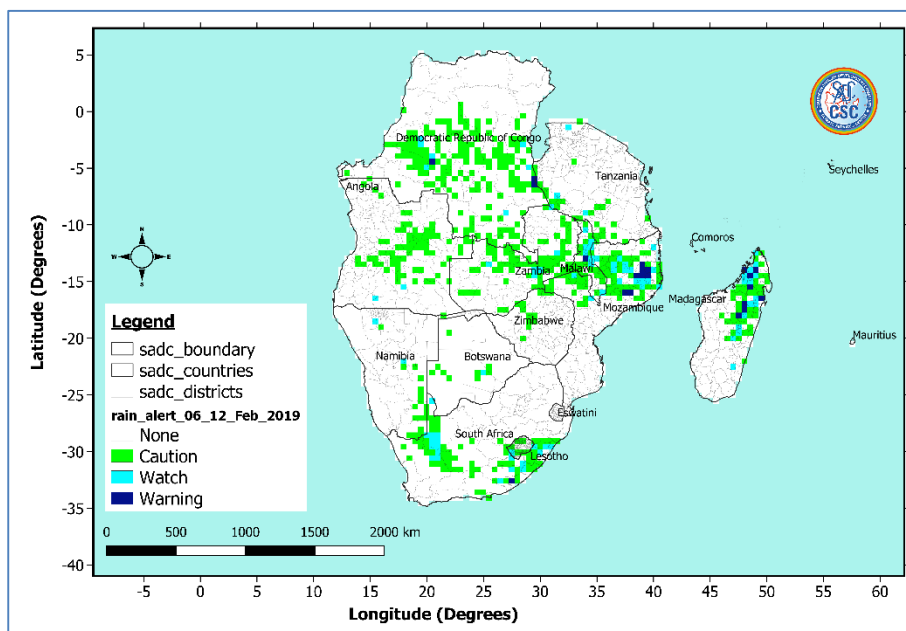


Figure 1: Projected heavy rainfall alert from 6th to 12 February 2019 (Data Source: ECMWF)

WATCH ZONE

Mauritius is expected to be impacted directly by tropical cyclone GELENA, while Mozambique and Madagascar will experience heavy rains not directly from the cyclone, but due to the cyclone's moisture suction effect.

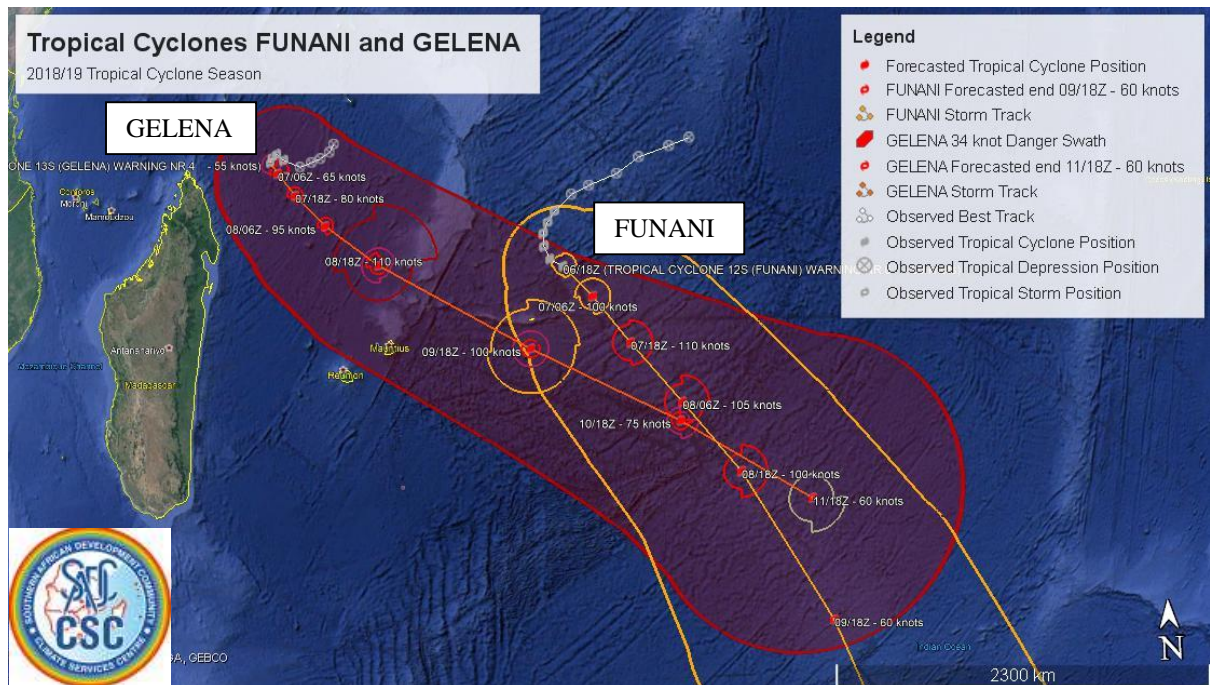


Figure 2: Observed and predicted storm track for Tropical Cyclones FUNANI and GELENA (Data Source: JTWC)

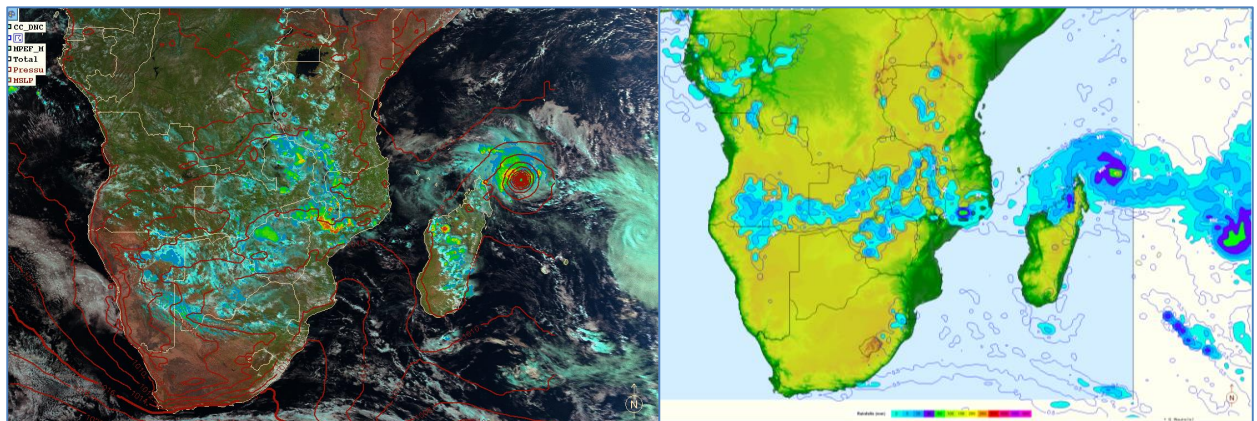


Figure 3: Current positions of Tropical Cyclones FUNANI (right) and GELENA (left) (Image Sources: EUMETSAT (left image) and ECMWF (right image))

Recommended Action

National Meteorological Services of Mozambique, Madagascar and Mauritius should monitor the tropical cyclone evolution during the next 24 to 72 hours. Response agents such as National Disaster Management Agencies operating in central to northern Mozambique, north-eastern Madagascar and Mauritius, must be on the alert.