



SADC Climate Services Centre
P / Bag 0095 ,
Gaborone ,
Botswana
Tel : + 267 - 3953411 / 13, 3951863
Fax + 267 - 3972848 / 3181070
Web : www.sadc.int

SEASONAL RAINFALL OUTLOOK UPDATE

FOR JULY TO SEPTEMBER (JAS) 2017

BY
SADC-CSC

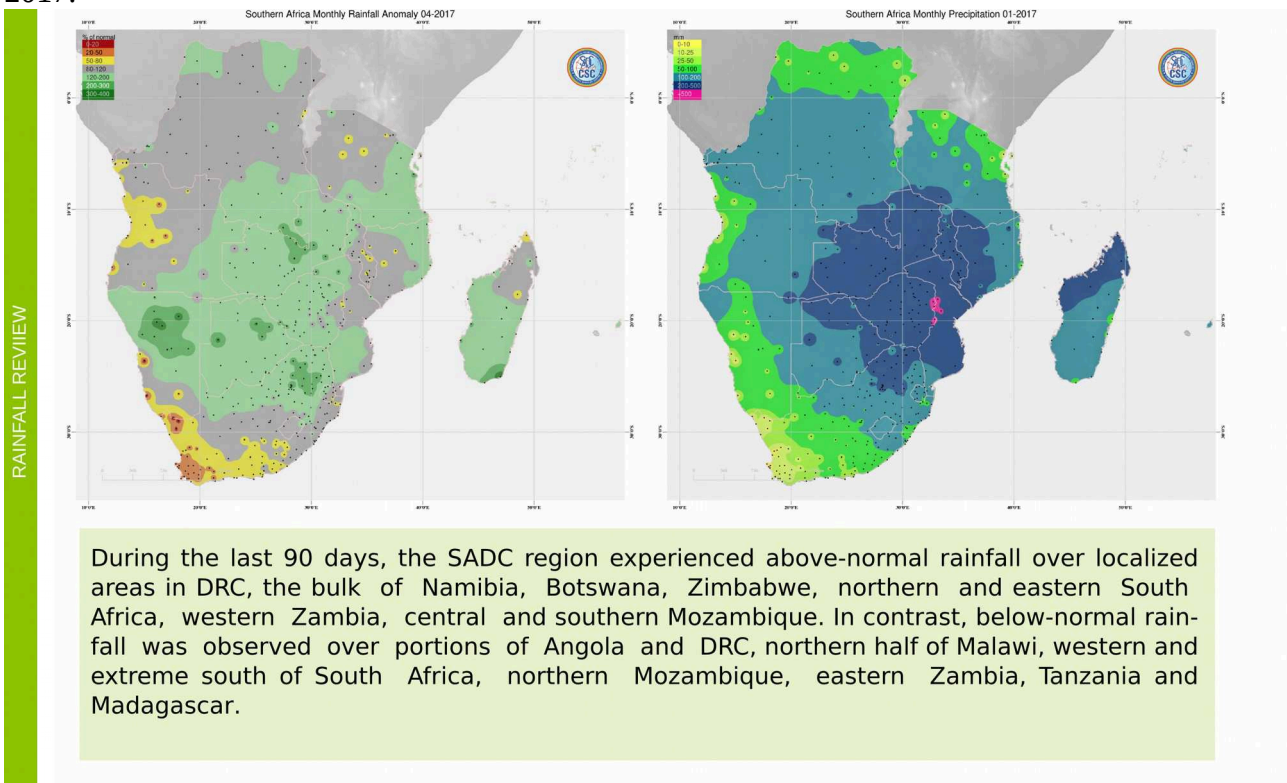
ISSUED ON : JUNE 29 2017

Forecast July to September Summaries

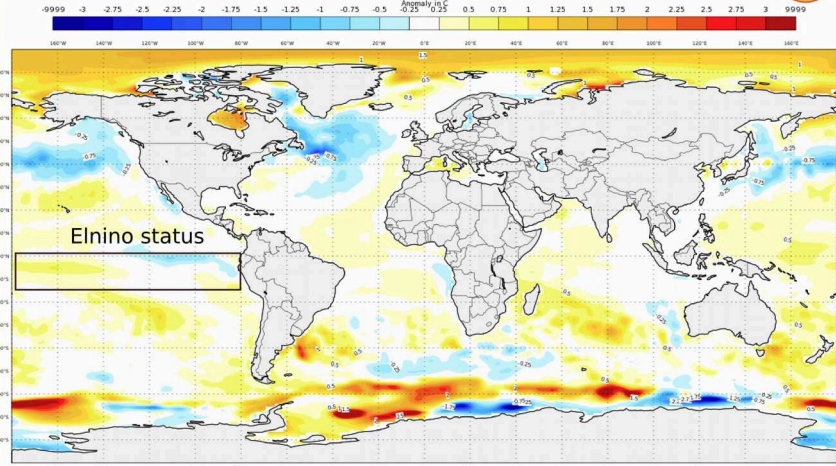
After many considerations, the consensus **the seasonal is above normal precipitation for July to september 2017.**

During May 2017, **ENSO neutral continued.** Many models predict the onset of El Niño (3 month average Niño 3.4 index at or greater than 0.5°C) during the Northern Hemisphere summer. However, the NCEP CFSv2 and most of the models from the latest runs of the North American Multi Model Ensemble (NMME) are now favoring the continuation of ENSO neutral. These predictions, combined with the near average atmospheric conditions over the Pacific, have resulted in slightly more confidence for the persistence of ENSO neutral (50 to ~55% chance). However, chances for El Niño remain elevated (35-50%) relative to the long term average into the fall.

In summary, ENSO neutral is favored (50 to ~55 % chance) through the Northern Hemisphere fall 2017.

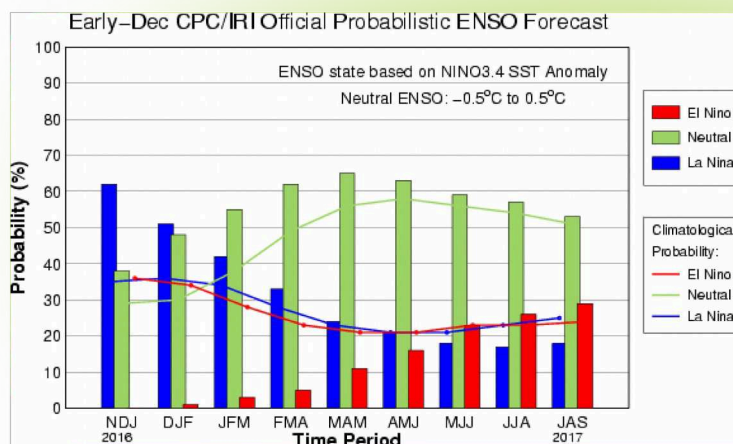


Meteo France ARPEGE S5 Long Range Forecast
Ensemble Mean Anomaly for Parameter : Sea Surface Temperature
Valid for the July/August/September trimester | Issued on : 2017-07-01



During May, ENSO-neutral continued, though sea surface temperatures (SSTs) were above average in the east-central Pacific Ocean. The latest weekly Niño index values were near +0.5°C in most of the Niño regions, except for the easternmost Niño-1+2, which was at +0.2°C. The upper-ocean heat content anomaly increased during May, reflecting the expansion of above-average sub-surface temperatures across the central and eastern Pacific in association with a downwelling oceanic Kelvin wave.

Current ENSO Forecast



Source: IRI

Figure 2: Latest ENSO Forecast 2016/17

ENSO Alert System Status:

2.1.2 Current ENSO Forecast
La Niña is slightly favored to persist (~51% chance) through the Summer 2016-17. A transition to ENSO-neutral is favored during January-March 2017. Source: IRI

PROBABILITY FOR ABOVE NORMAL PRECIPITATION

Météo France ARPEGE S5 Long Range Forecast

Prob. for Above normal tercile for Parameter : Total Precipitation

Valid for the July/August/September trimester | Issued on : 2017-07-01

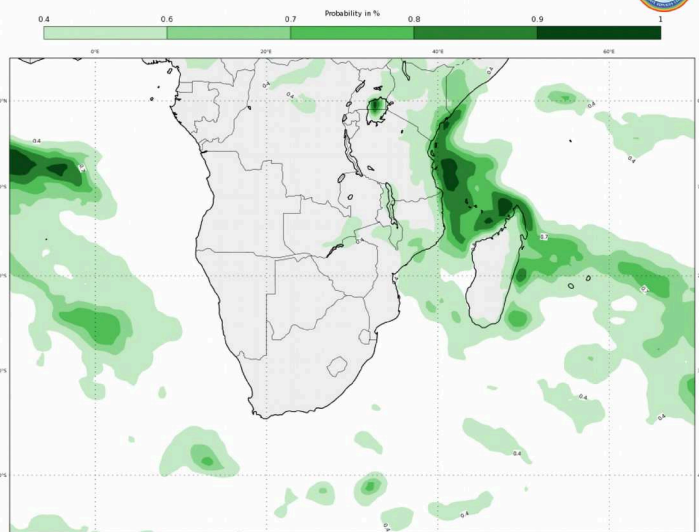


Fig 1: showing probability of above normal

Northern parts of DRC, southern parts of Zambia, most parts of Malawi, east of Mozambique, eastern and south coastal regions of Madagascar and the eastern parts of Tanzania received above normal precipitation with probability of 40 to 60%, while northern parts of Tanzania are expected to experience above normal precipitation of 80

Forecast : Normal to below normal rainfall

	Temperature	Rainfall
AUGUST	Above Normal	Bellow normal
SEPTEMBER	Above Normal	Normal